

RECEIVED
LARAMIE COUNTY
CLERK

27 SEP 87 11 33 AM

CERTIFIED LAND CORNER RECORDATION

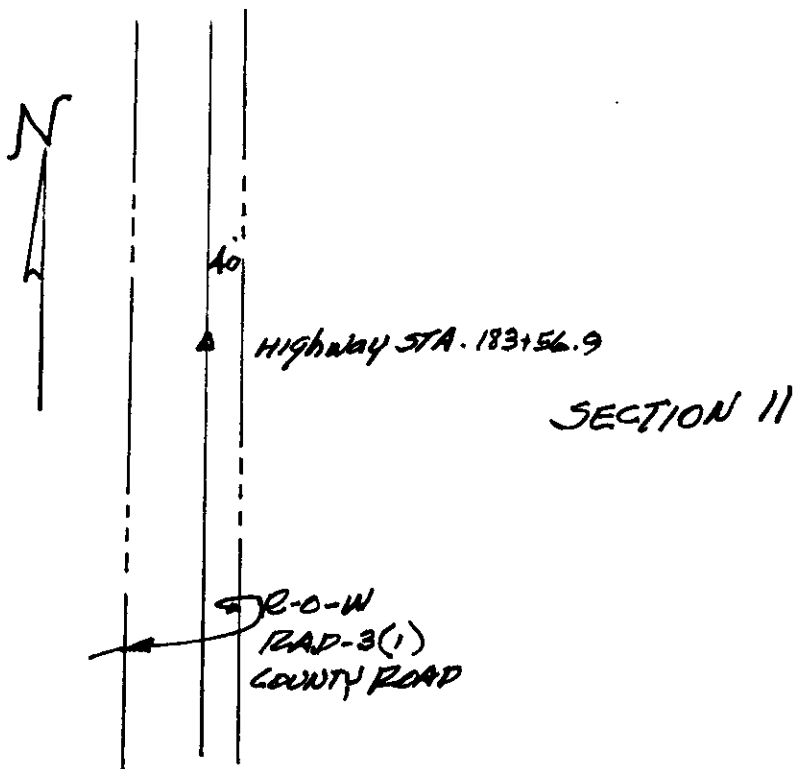
DESCRIPTION OF CORNER EVIDENCE FOUND, AND ORIGINAL RECORD (if known)

WEST 1/4 CORNER SECTION 11
CORNER NOT FOUND
T. 13 N., R. 64 W.
6th P.M.

DESCRIPTION OF MONUMENT AND ACCESSORIES ESTABLISHED TO PERPETUATE THE ORIGINAL LOCATION OF THIS CORNER:

SET 5/8" X 18" REBAR WITH SURVEY CAP
USING INFORMATION ON HIGHWAY PLANS
RAD-3(1)

SKETCH, WITH COURSE AND DISTANCE TO ADJACENT CORNER IF DETERMINED IN THIS SURVEY.
(May Sketch or Paste Reproduction on Reverse Side.)



I, D.M. Hopkins certify that I have carefully performed or reviewed the work done on the diagrammed corner as reported on this recordation form and approve the same.

Ronald M. Hopkins
Signature of Surveyor

558
Registration No.

STATE OF WYOMING,
Office of Clerk and Recorder,
County of Laramie

This "corner record" was filed for record on the 2 day of September, 1987, was noted on the cross-index plat and is assigned page No. _____, in book No. _____.

Frank C. Whitcomb
County Official

Cross Index No. <u>9-17</u>	T. <u>13</u>	R. <u>64</u>	Mer.
_____	T. _____	R. _____	Mer.
_____	T. _____	R. _____	Mer.
_____	T. _____	R. _____	Mer.
_____	T. _____	R. _____	Mer.
_____	T. _____	R. _____	Mer.
_____	T. _____	R. _____	Mer.